

Rasonic
樂信牌

RSB-BC2

迷你雙層蒸煮盒 Mini Double-deck Steam Box



僅適用於家庭使用
For household use only

使用說明書

OPERATION MANUAL

- 在使用本產品前，請仔細閱讀本說明書，閱讀後小心收藏，以備日後查閱。
- Please read the operation manual carefully before using. Keep it in a safe place for future reference.
- 本說明書中的圖示可能有與實物不同的地方，僅供參考。
- Some figures in this manual may not match with the real object, just for reference only.

非常感謝您選購樂信牌迷你雙層蒸煮盒。使用前，請先詳細閱讀本說明書，並保存以備日後參考。

目錄

1. 安全注意事項
2. 清潔及保存注意事項
3. 產品規格
4. 產品結構
5. 使用方法
6. 故障排除
7. 特別聲明
8. 售後服務

1. 安全注意事項

使用本產品前，請先仔細閱讀相關說明。不遵循或忽視這些安全注意事項會導致火災、觸電或個人傷害。

1. 使用前，請將產品的包裝物料全部取出及棄掉，並使用中性和清潔劑配合海綿清洗不銹鋼盒及蒸架。
2. 接通電源前，請確保開關按鈕未被按下。檢查當地電壓是否與產品額定電壓相符，並將插頭插入合適及有良好接地的插座上。
3. 切勿使用外置計時器或遙控系統來操作本產品。
4. 切勿直接於注水格內(發熱盤上)加熱食物。
5. 切勿在以下環境使用本產品：
 - 不平穩的表面；
 - 潮濕或接近水源的地方；
 - 靠近熱源及火源的地方(如焗爐、電磁爐等)；
 - 易燃物料或不耐熱物品附近(如地毯、塑膠、枱布、窗簾及毛巾等)；
6. 如注水太多或超出最高水位線“MAX”位置，有可能造成溢瀉或大量蒸氣噴出等危險。
7. 切勿於運作中途打開頂蓋，否則沸水會濺出引致燙傷。如需打開頂蓋，必須先按開關按鈕關掉產品，方可打開頂蓋。
8. 檢查食物時，建議使用長把手的用具。取出食物時，為免被蒸氣燙傷，請使用隔熱手套。
9. 產品上方不得放置任何物品，切勿遮蓋或阻擋產品的頂蓋及散熱位，防止產品過熱、變形或變色等情況。
10. 使用前，請確保電源插頭已徹底連接，否則會因接觸不良導致電源線過熱，影響產品的運作，加速產品損壞或引起火災。

11. 本產品不設計時功能，用戶須自行因應所需烹調時間注水或切斷電源。注水至最高水位線“MAX”為例，整體操作時間約40分鐘。

注意！整體加熱時間會受新注入的水水溫所影響。

12. 本產品備有過熱保護功能。如需連續使用，建議於首次操作後暫停20分鐘，待產品冷卻後方可再重新使用。乾水停機屬產品保護裝置，切勿以此方式關閉產品。
13. 按下開關按鈕時，切勿用力過度，以免損壞按鍵；使用後，再按一次開關按鈕並拔掉電源線，以免產品因長時間通電而引致損壞或造成火警風險。
14. 避免烹調過酸或過鹼的食物。
15. 使用一段時間後，機身或配件可能會有染色情況。此乃食材本身的色素所致，屬正常現象，無損健康，並不影響使用。
16. 當注水格沒有水時，請勿啟動本產品。如出現乾燒情況，請立即注水或拔掉電源插頭。注水時請小心，切勿用手接觸發熱板，以免造成燙傷。
17. 切勿讓本產品在無人看管或注水格沒有水的情況下運作。
18. 完成烹調後，關閉產品電源及拔掉電源插頭，靜候數分鐘後再打開頂蓋，以免被餘熱灼傷。因機內仍有大量水氣，產品頂蓋會有水珠(倒汗水)凝結，此乃正常現象，小心打開頂蓋，避免水珠從頂蓋掉落開關按鈕或電源接駁位。
19. 若有兒童在旁，須加倍小心使用本產品及看管兒童，以確保他們不會把本產品當作玩具。切勿讓兒童單獨使用、清潔及保養此產品，並將本產品及其電源線置於遠離他們的地方。
20. 使用時，將有大量蒸氣從排氣口冒出！切忌將手、面或身體靠近排氣口，避免灼傷，亦避免將本產品貼靠牆壁或家具使用。

21. 運作過程中，切勿打開頂蓋、移動或搖晃本產品。否則，有可能引致大量蒸氣冒出而造成燙傷或其他危險。使用時或剛使用後，切勿觸摸外殼或發熱部件，以免被高溫及餘熱灼傷。
22. 切勿將本產品機身、電源線、插頭浸入水中，或用水沖洗電源接駁位或讓其接觸到水份，以免影響本產品的安全性能或可能構成觸電危險。使用前，必須確保插頭已充分擦乾。
23. 小心使用電源線，不可在電源線上放置重物或夾住電源線；不可改裝、用力拉扯或扭曲電源線；在拔出或插入插頭時，應用手握穩插頭，並確保將電源線與產品本身及電源插座接駁良好。否則可能會發生危險或損毀機件。
24. 切勿在電源線纏結的情況下使用本產品，或將電源線懸掛在桌子、櫥櫃的邊緣或讓其接觸發熱的表面，否則會加快電源線的損耗及損壞產品。
25. 使用後或長期不使用時，請拔下電源插頭，以免因長期通電導致內部組件絕緣老化而引致漏電。切勿用濕手接觸、插上或拔除插頭，否則有可能引致觸電。
26. 經常清理插頭上的塵埃，保持產品清潔及不沾油污，以免引起火災。
27. 切勿將本產品用於室外及烹飪以外的其他用途。（否則，有可能發生故障或產生危險。）
28. 本產品可供年齡在8歲或以上的兒童及體質、感覺或智力有障礙人士或缺乏經驗和相關知識的人士使用，但他們必須接受負責安全人士的監督或指導如何安全地使用本產品和理解所涉及之危險。
29. 本產品僅供家用或在類似環境使用，如：商店內部、辦事處以及其他工作環境的員工廚房區域或類型的環境，切勿於戶外使用。
30. 經常檢查主機、配件、電源線及插頭。如發現有任何損毀或曾經跌落，為免發生危險應立即停止使用，並聯絡信興電器服務中心有限公司進行檢查及維修。
31. 必須使用生產商提供的原裝配件。切勿擅自改裝本產品或使用非生產商提供的零件進行修理，否則可造成危險及維修保養無效。
32. 遵從安全守則及避免釀成意外，如需要維修本產品，請攜同本產品、保修卡（**印在包裝盒上，必須剪下保留**）、發票或換領收據到信興電器服務中心有限公司，地址印於本說明書的背頁或致電熱線查詢：2406 5666。

2. 清潔及保存注意事項

1. 清潔前，必須拔除電源插頭，並待產品完全冷卻。
2. 使用後，可用清水或少量中性清潔劑清洗不鏽鋼盒及蒸架。切勿用汽油、去污粉或粗硬的潔具(如鋼絲刷或百潔布等)清潔本產品。
3. 使用數次後，發熱盤位置或會出現乳白色、啡色或黑色的圓點，這是由於水中含有礦物質。礦物經過加熱轉化成化合物，然後沉澱形成水垢。水的硬度愈高，水垢囤積速度愈快，此乃正常現象，不影響使用。

清除水垢可參考以下方法處理：

- 於注水格內注入清水(切勿超過最高水位線“MAX”位置)；
- 將兩至三片檸檬放入注水格內(或按每升水20克檸檬酸比例加入)；
- 按開關按鍵將水加熱至沸騰，然後關機靜候約20分鐘。將注水格內的水全部倒掉，然後用海綿或軟毛刷擦洗發熱盤位置。完成後，用水沖洗過淨。

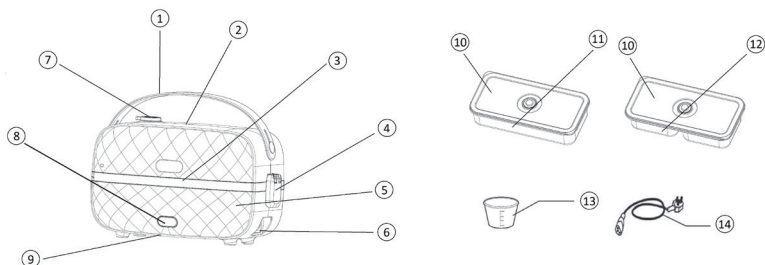
注意！如發現有檸檬酸味殘留，可再次注水(切勿超過最高水位線“MAX”位置)加熱至沸騰，然後將水倒掉即可。

4. 如發現主機或頂蓋表面有污漬，可用柔軟的潔布抹淨。
5. 切勿使用有毒或含腐蝕性的清潔劑進行清潔。
6. 待清洗及產品完全冷卻後，可將產品放入紙箱然後儲存在乾爽的環境中。切勿用電源線纏繞在本產品四周或壓住電源線，避免造成電源線損壞。

3. 產品規格

型號	RSB-BC2
額定電壓	220-240伏特~ 50-60赫茲
額定功率	300瓦
淨重(約)	1.3公斤
產品尺寸(闊 x 深 x 高)	260 x 135 x 155毫米

4. 產品結構



提示：主機(包含開關按鈕、電源接駁位及機底通風位)與電源線屬不可清洗部分。

註：以上圖片僅供參考，尺寸比例或有差異，以實物為準。

4.1 產品部件及配件說明

編號	部件／配件名稱	用途說明
1	頂蓋提手	用於提取產品
2	頂蓋	產品上蓋〔運作時，切勿觸摸此蓋的蒸汽口〕
3	蒸架	用於蒸飯／蒸煮食物
4	蓋扣	用於鎖定頂蓋及主機
5	主機	產品的主要電器部分(內有注水格，切勿注水超過最高水位線“MAX”位置)
6	電源接駁位	連接電源線
7	排氣口	排出蒸汽的位置(注意！蒸煮時切勿將手放近，以免燙傷)
8	開關按鈕	開啟或關閉本產品(開啟時，指示燈會亮起)
9	機底通風位	位於產品底部。切勿將產品置於地毯、塑膠檯布、紙品或墊子等軟物件上使用，以免堵塞通氣位(如有堵塞，或會造成故障)
10	透明容器蓋	僅用作保存食物用〔加熱時，切勿使用此蓋〕
11	不鏽鋼單格盒	用於蒸飯／翻熱飯菜
12	不鏽鋼雙格盒	用於蒸飯／翻熱飯菜
13	量杯	用作量水
14	電源線	連接電源接駁位與電源插座

4.2 建議蒸煮時間

注水量及參考時間表

用途	食物份量／層數	食物注水量	注水格水量	建議蒸煮時間(約)
煮飯	米1杯*	120毫升	至MAX	30分鐘
	米2杯*	240毫升	至MAX	30分鐘
翻熱食物	單層	毋需加水	不少於100毫升	20分鐘
	雙層	毋需加水	不少於100毫升	20分鐘

* 以隨產品附送之量杯為準

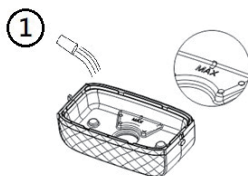
* 以上蒸煮時間只供參考，食物可能因為溫度、種類、份量等不同而各有差異，用戶需根據個人經驗及實際情況進行調整。

溫馨提示：

- 翻熱飯餸或蒸飯時，請先移除透明容器蓋。
- 當蒸煮盒正在運作時，請勿觸碰上蓋或接近蒸氣口，以免燙傷。

5. 使用方法

1. 同量杯於注水格加水至最高水位線“MAX”位置(具體可參照章節4.2建議蒸煮時間)，然後將要加熱的飯菜放入不鏽鋼盒內。



2. 放好食物後，將不鏽鋼盒放入注水格，然後放上蒸架，再將另一個不鏽鋼盒放上蒸架。



提示：放入食物盒前，須先將透明容器蓋取下。

3. 接通電源，按下開關按鈕。當指示燈亮起表示產品已開始運作。



4. 運作完成後，按開關按鈕，指示燈熄滅、產品將停止運作。(如烹調時間需延長，須自行按開關按鈕停止運作，重新注水後重新啟動以延長運作時間。)

備註：當注水格水量蒸發直較低水位時，保護裝置便會自行啟動並自動斷電，指示燈便會熄滅，產品停止運作。
(當放涼後再接通電源，指示燈將重新亮起)。切勿依賴保護裝置關閉產品，否則將影響加熱效果。

提示：當保護裝置啟動後，食物仍有可能出現未充分加熱的情況，用戶需自行調節加熱時間。(如需加熱多於40分鐘，用戶需於40分鐘前注水，以延長整體加熱時間。)

6. 故障排除

如出現以下異常情況或故障，應立即停止使用，並將本產品送往信興電器服務中心有限公司進行檢查及維修。

1. 電源線或電源插頭異常發熱。
2. 稍微屈曲電源線，產品即時出現斷續通電的情況。
3. 產品異常發熱、釋出燒焦味道或冒煙。
4. 當接觸產品的外殼，有感覺到觸電情況。
5. 有部分時間無法自行斷電。
6. 漏水。

7. 特別聲明

1. 本資料上所有內容經過核對，如有任何印刷及內容上的誤解，本公司將保留解釋權。
2. 本產品若有技術改進，會編進新版說明書中，恕不另行通知；產品外觀、顏色如有改動，則以製造商生產資料為準。
3. 如本資料之中英文版本有差異時，應以中文版為準。
4. 使用說明書的電子副本可通過電子郵件發送致客戶。如有需要，可致電信興電工工程有限公司：28612767。

8. 售後服務

1. 由購買收據起之一一年保修期內，經信興電器服務中心有限公司之服務人員證實產品故障屬正常使用發生者，本公司將提供免費維修或更換零件服務。經更換之任何損壞／毀零件，將屬本公司所有。保修範圍不包括修理或更換損耗性零件及配件。如使用不當，或作(半)商業用途，或未依照說明書使用，保修服務將無效，本公司將不會承擔任何損壞的維修及賠償。
2. 用戶必須於維修時出示購買／換購及蓋有銷售點／換購中心印章的保修卡(印在包裝盒，必須剪下保留)，如有任何疑問，請致電信興電器服務中心有限公司熱線查詢：24065666。

Thank you for choosing Rasonic Mini Double-layer Steam Box. Read the operation manual carefully before using and keep the operation manual for your future reference.

Table of Contents

1. Important Safeguards
2. Cleaning and Storage Guideline
3. Product Specifications
4. Product Structure
5. Operation Instruction
6. Trouble Checking
7. Special Avowal
8. After Sales Services

1. Important Safeguards

Read the operation manual before use, failure or negligence in observing these safety precautions could cause fire, electric shock or personal injuries.

1. Remove and discard all packing materials of the appliance before operation. Clean the stainless steel containers and steam plate by using sponge moisten with mild detergent.
2. Before connecting to electricity, ensure that the input voltage specified on rating label is consistent with the local voltage and connect the plug to a suitable and grounded socket.
3. The appliance is not intended to be operated by means of an external timer or separated remote control system.
4. Do not cook directly inside the water tank (heating plate).
5. Do not operate the appliance under the following conditions:
 - Uneven or rough surface;
 - Wet or near water area;
 - Next to heat and fire sources (e.g. oven or induction cooker etc);
 - Flammable and poor heat resistant products (e.g. carpet, plastic table cloth, curtains and towel etc);
6. Do not exceed the maximum water indicator “MAX” to prevent water from spilling out or steam discharging.
7. Do not open the lid during operation, otherwise the boiled water may spill out and cause burns. If necessary, press “On/Off” button to switch off the appliance before open the lid.
8. Always use kitchen utensils with long handles when checking the food inside; To avoid scalding by hot steam, use oven mitts to pick up the food from the appliance.
9. To prevent overheating the appliance, do not cover the appliance or block the steam vent on the lid to avoid lid deformation or discolor.
10. Make sure the appliance is plugged firmly before use. Otherwise, it may cause cable overheat due to poor contact with electrical source, affect the operation and damage the appliance or cause fire.

11. The appliance is not equipped with timer function. User may adjust water added and cut off the power depending on personal cooking preference. The complete cycle for the suggested maximum amount of water is around 30 minutes. If the desired heating time is less than 30 minutes (e.g. 20 minutes), user should monitor the time and turn off the appliance manually after 20 minutes. Otherwise, the operation will continue until the water inside the water tank completely evaporated. If the desired operation time is longer than 30 minutes (e.g. 50 minutes), user should add appropriate amount of water within 30 minutes after begin, otherwise, the operation will be suspended when water completely evaporated.

Note: Entire heating time may extend after adding water to the water tank.

12. The appliance equipped with overheating protection function. If continuous operation is needed, shut down for 20 minutes after first trial, wait until the appliance to cool down completely before reusing. Do not rely on overheat protection function to switch off the appliance.
13. When pressing the "On/Off" button, do not push it with extra force to avoid damaging the button. After operation, press "On/Off" button again shut down and unplug the appliance to avoid damaging the electronic elements or even causing fire due to long-term connect to the electricity.
14. Avoid using the appliance to cook food which is acidic or alkaline.
15. The appliance may get stained after using periods of time. It is because ingredients contain pigment itself. This is a normal phenomenon, causing no damage to human body and usage.
16. Do not switch on the appliance when there is no water inside the water tank. Add water or unplug the power socket immediately when water run out. Be careful when adding water, do not touch the heating plate with bare hands to prevent burns.
17. Never leave the appliance unattended when in use or operate without water in the water tank.

18. After cooking, a lot of vapor and water droplets will remain inside the body and the lid, which is a normal phenomenon. To avoid burns, switch off the appliance and unplug the power, wait for a few minutes before opening the lid to avoid burn by residue heat. Open the lid carefully to avoid condensed water droplets dropping from the lid onto the "On/Off" button or power connector.
19. Great care is necessary in using the appliance, especially near children. Children should be supervised to ensure that they do not play with the appliance. Also, children without adult supervision should not operate, clean and maintain the appliance. Keep them away from the appliance and its power cord.
20. During operation, massive steam will be ejected from the steam vent. Be careful to avoid burns! Do not get your face or hands close to the steam vent during operation or right after use. Avoid using the appliance near the wall or furniture.
21. Do not open the lid, move or shake the appliance during operation, otherwise, massive steam will be released causing burns or danger. Do not touch the product enclosure and heating element when heating or just after use, to avoid burn by hot surface and residual heat.
22. Never immerse the appliance, main body, power cord, power plug into water and power connector should not be in touch with water, as it will affect its safety performance and cause electric shock. Make sure the plug is dried before use.
23. Use the power cord with care, do not place heavy objects on the power cord. Never clip, modify, stretch or twist the power cord; when unplugging or inserting the plug, be sure to grasp the power plug itself when plug in or unplug the appliance, and make sure the power cord, the product and the power socket is connected. Otherwise it may cause danger and damage the appliance.
24. Do not operate the appliance when the power cord is tangled, do not hang the power cord over the edge of a table, a counter-top or touch any hot surface, otherwise, it will speed up its deterioration.

25. When not in use or after usage, pull the power plug out of the socket to prevent electric shock due to insulation aging. Do not touch, plug in or remove the plug with wet hands, it can cause electric shock.
26. Always clean the power plug, and ensure the appliance is clean, dust free and oil free to prevent fire.
27. Do not use the appliance outdoor or any purposes other than cooking food. (Misuse can cause potential injury and product damage).
28. The appliance can be used by children aged from 8 years and above and persons with reduced physical, sensory or mental capabilities, or lack of experience and knowledge, if they have been given supervision or instruction concerning use of appliance in a safe way and understand the hazards involved.
29. This appliance is intended to be used in household or similar application such as staff kitchen areas in shops, office and other working environments, by clients in hotels, motels and other residential type environment.
30. Always check the appliances, accessories, power cord and power plug. If the appliance is damaged or dropped, do not use the appliance to prevent danger, and contact Shun Hing Electric Service Center Limited for checking and repairing.
31. Use the parts that are authorized and provided by the manufacturer. Do not use or replace any parts and assembly which is not produced under authorization, otherwise, the warranty becomes invalid.
32. Follow the safety precaution/instruction to prevent accidents from happening, contact Shun Hing Electric Service Center Limited. when repair is needed (address is printed on the back cover of the manual or call 2406 5666 for inquiry), make sure to show warranty card (**printed on the gift box, and must be saved it for future reference**), invoice/redemption voucher during repairing.

2. Cleaning and Storage Guideline

1. Before cleaning, unplug the appliance and wait until the appliance cool down completely.
2. After use, clean the stainless steam containers and steam plate with mild detergent. Never use gasoline, decontamination powder or harsh cleaning tools (e.g. metal brush or scouring pad etc.) for cleaning.
3. Due to the minerals in water, color scale will be found on the heating plate after heating. The harder the water, the quicker the scale will be formed. It is a normal phenomenon and will not affect the operation.

To remove the water scale, follow the below instructions:

- Fill water into the water tank (do not exceed the maximum water indicator "MAX").
- Put 2-3 sliced lemon in the water tank (Or follow the ratio to add 20g citric acid per 1L water).
- Press the "On/Off" button to start until the water boiled. Wait and pour out all water after around 20 minutes. Then clean the heating plate with a sponge or soft brush, and rinse by water in the end.

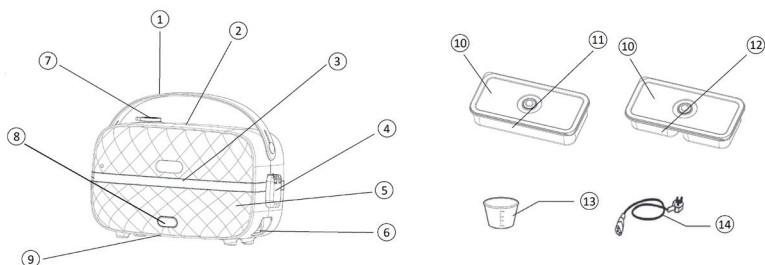
Notice! To remove the remaining smell of citric acid, boil water (do not exceed the maximum water indicator "MAX") again and pour it out afterward.

4. When the main body and the lid is dirt, wipe it with a wet cloth.
5. Do not use toxic and abrasive cleaners for cleaning.
6. The appliance must be completely cooled and cleaned before storage. Store it in a carton and place it in a dry environment. Never wrap the power cord tightly around the appliance or put any pressure on the power cord to avoid damage.

3. Product Specifications

Model	RSB-BC2
Rated Voltage	220-240 V ~ 50-60 Hz
Rated Power	300 W
Net Weight (Approx.)	1.3 kg
Product Dimension (W x D x H)	260 x 135 x 155 mm

4. Product Structure



Hints: Mainbody (including On/Off button, power connector and bottom ventilation) and power cord are non-washable parts / accessories.

Note: The above illustrations are for reference only. Size may differ from real object and subject to the actual appliance.

4.1 Spare Part and Accessories

Item No.	Name of Parts / Accessories	Description
1	Handle	Lift up the appliance
2	Transparent Lid	Lid of the appliance (Do not touch the steam vent during operation)
3	Steam plate	Use for steaming rice or food directly
4	Buckle	Lock the lid and main body
5	Main body	Core electrical construction of the appliance. It consists of water tank which cannot pour in water exceeding the maximum water indicator "MAX"
6	Power connector	Connect with the power cord
7	Steam release outlet	The outlet where steam comes out. (CAUTION! Do not touch when the appliance operating otherwise you may get scorched)
8	"On/Off" button	To switch On/Off the appliance (Power indicator will light on when operating)
9	Bottom ventilation	Situated at the bottom of the appliance. Do not place the appliance on top of carpet, plastic tablecloth, paper sheet or mat etc. (If the bottom ventilation is clogged, it may cause malfunction)
10	Container cover	Use only for storage (Do not use it when cooking/steaming)
11	Stainless steel container (Single grid)	Use for reheating or steaming food
12	Stainless steel container (Double grid)	Use for reheating or steaming food
13	Measuring cup	Use for measuring water
14	Power cord	Connect with power connector and power socket

4.2 Recommended Cooking Time

* Suggested water volume and cooking time

Purpose	Food Amount/Layers	Add water to food	Add water to water tank	Cooking time
Cook Rice	Rice x 1 cup*	120ml	MAX	~ 30 mins
	Rice x 2 cups*	240ml	MAX	~ 30 mins
Reheat food	Single Layer	No need	At least 100ml	~ 20 mins
	Double Layers	No need	At least 100ml	~ 20 mins

* Please use the given measurement cup to measure food amount.

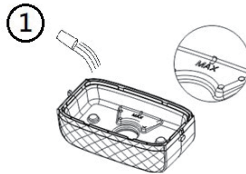
* The cooking time of different food is varied by temperature, types, quantity etc. the above operation time is for reference only, user may adjust the operation time according to the actual cooking condition and experiences.

Reminder:

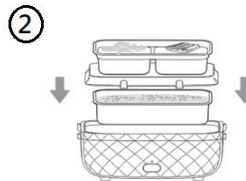
- Before reheating food or steaming, please remove transparent container cover.
- When the appliance is functioning, DO NOT touch the lid or steam vent to avoid burn.

5. Operation Instruction

1. Fill water into the water tank until reached maximum water indicator "MAX" (refer to chapter 4.2 Recommended Cooking Time). And then place the food in the stainless steel container.



2. Place the filled food container on the water tank before assembling the steam plate. After that, place another container on top.



- Put on the lid and then lock up with the buckles, and then turn on the appliance by pressing "On/Off" button. Once the indicator light up, means the appliance already started operating.



- Once water is evaporated to lower water level, protection sensor will be activated. Electric power will be cut off automatically. When the light is off, means the operation is finished. (If shorten/extend the steaming time, please press the "On/Off" button manually/add water to extend the operation.)

Once water is evaporated to lower water level, protection sensor will be activated. When the protection sensor is activated, electric power will be cut off automatically. When the light is off, the operation is done. (If shorten/extend the steaming time, please press the On/Off button manually/add water to extend the operation.)

Reminder 1: Take off the transparent container cover before steaming.

Reminder 2: When the water tank is about to dry up, protection will be activated automatically, food might not be heated as sufficiently.

6. Trouble Checking

If the below conditions occurred, stop using the appliance immediately, and send the appliance to Shun Hing Electric Service Centre Limited to check and repair.

1. If the power cord and power plug is heating abnormally.
2. If the electricity flows discontinuously when the power cord is slightly bended.
3. If the appliance is abnormally hot, emitting burnt smell and smoke.
4. If you get electrically shocked when touch the appliance.
5. If the appliance sometimes couldn't turn off automatically.
6. If there is water leakage.

7. Special Avowal

1. The content in the manual has been checked. Our company reserves the hermeneutic power to any printing errors or misunderstanding on the content.
2. If there are technical improvements on the appliance, the operation manual will be updated in new version without prior notice. The product appearance and specification are subject to the manufacturer information.
3. In case there is any inconsistency or conflict between the English versions and Chinese versions of the terms, the Chinese versions shall prevail.
4. E-copy of user manual can be sent by e-mail on request, please call Shun Hing Electric Works & Engineering Co. Ltd at 2861 2767.

8. After Sales Services

1. For any defect, in the judgement of technician from Shun Hing Electric Service Centre Limited, cause under normal use, our company is responsible for repairing and replacing any parts of the said electrical appliance free of charge within one year guarantee period commencing from the date of purchase. Any defective part which has been replaced shall become our property. Warranty service does not cover the repair or replacement of consumable parts. If appliance is used improperly, for commercial or semi-commercial use, or not following the instructions in the operation manual, the warranty becomes invalid and our company will refuse any liability and repairing cost for the damage caused.
2. User must present the official invoice/redemption voucher and the warranty card (**Printed on the gift box, and must be saved it for future reference**) with the chop from sales point/redemption center for maintenance. For enquiries, call Shun Hing Electric Service Center Limited hotline at 2406 5666.



SHUN HING GROUP
信興集團
SINCE 1953

 **Rasonic 樂信牌**

信興電工工程有限公司

SHUN HING ELECTRIC WORKS AND ENGINEERING CO., LTD.

辦公室：香港九龍尖沙咀東部麼地道67號半島中心9樓909-912室

電話：2861 2767

圖文傳真：2865 6706

網址：<http://www.rasonic.com>

電郵：shew@shunhinggroup.com

Office: Room 909-912, 9/F, Peninsula Centre, 67 Mody Road, Tsimshatsui East, Kowloon, H.K.

Tel: 2861 2767

Fax: 2865 6706

Website: <http://www.rasonic.com>

E-mail: shew@shunhinggroup.com

保養及維修 Maintenance and Repair Service:

信興電器服務中心有限公司

SHUN HING ELECTRIC SERVICE CENTRE LTD.

香港新界葵涌勝耀街2號信興中心11樓

服務熱線：2406 5666

傳真號碼：2408 0316

網址：<http://www.shesc.com/zh>

11/F, Shun Hing Centre, 2 Shing Yiu Street, Kwai Chung, N.T. HK

Service Hotline: 2406 5666

Fax No.: 2408 0316

Website: <http://www.shesc.com/en>

客戶服務中心：

香港新界葵涌勝耀街2號信興中心1樓

九龍佐敦佐敦道23-29號新寶廣場20樓

香港天后琉璃街7號柏景中心22樓

澳門慕拉士大馬路193-199號南嶺工業大廈5樓I座

Customer Service Centre

1/F, Shun Hing Centre, 2 Shing Yiu Street, Kwai Chung, N.T.

20/F, Sino Cheer Plaza, 23-29 Jordan Road, Jordan, Kowloon

22/F, Parkview Centre, 7 Lau Li Street, Tin Hau, Hong Kong

Avenida de Venceslau de Morais, No. 193-199, 5 andar - I, Edf. Industrial Nam Leng, Macau

有關最新之香港及澳門客戶服務中心資料，請參閱信興服務中心網址：<http://www.shesc.com/zh>

For the latest information of Hong Kong and Macau service center, please visit <http://www.shesc.com/en>